



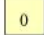



Percentage of households with five to nine hearths, 1670

-  Over 12%
-  6 to 12
-  3 to 6
-  Under 3
-  None

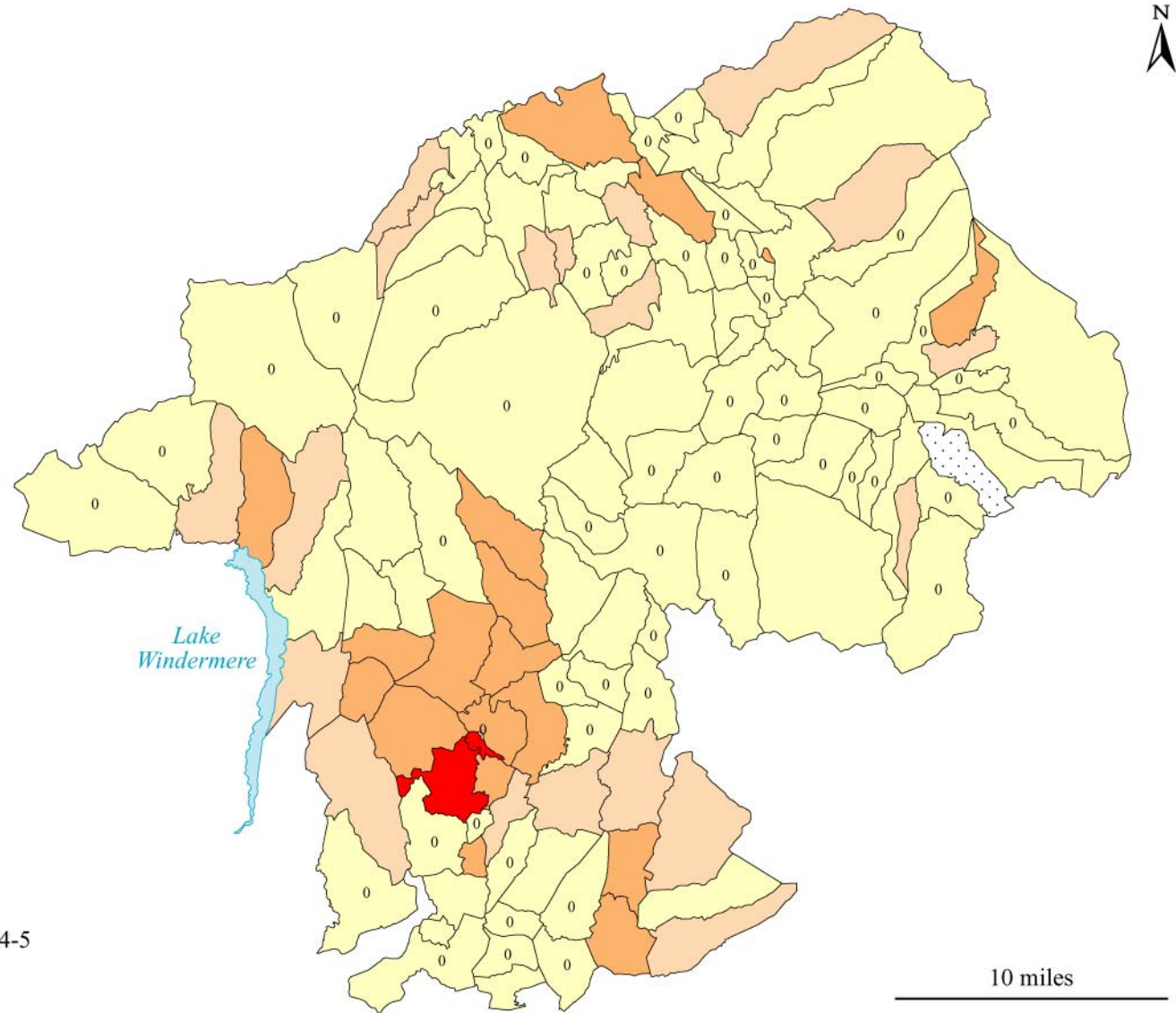
For collection areas which recorded no exempt, see map 9

 Constablewick not identified in 1670

For note on mapping see Appendix III

10 miles

---



Percentage of households with five to nine hearths, 1674-5

- Over 12%
- 6 to 12
- 3 to 6
- Under 3
- 0 None

Constablewick not identified in 1674-5

For note on mapping see Appendix III

10 miles