



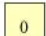



Percentage of households with ten or more hearths, 1670

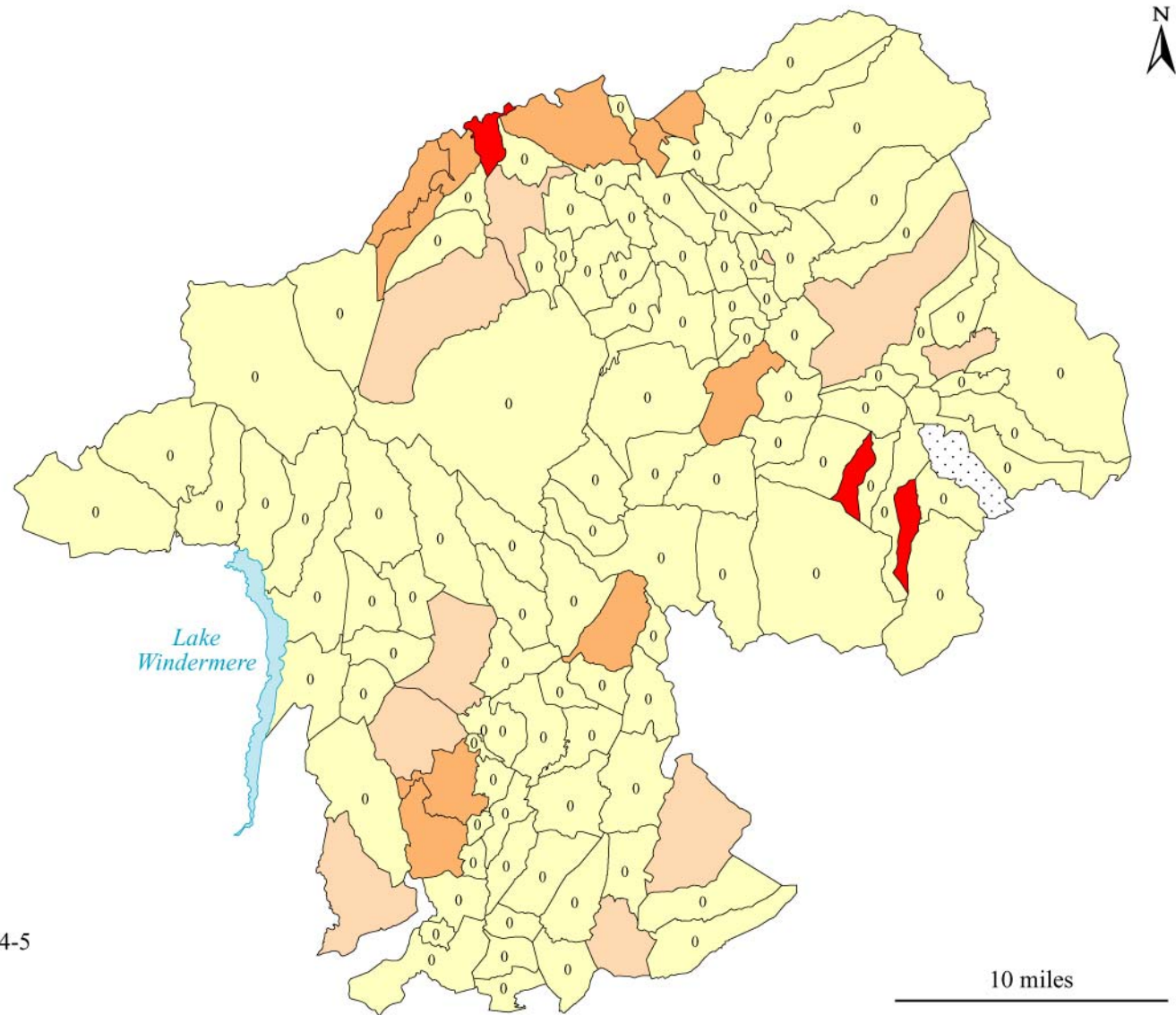
-  Over 3%
-  2 to 3
-  0.5 to 2
-  Under 0.5
-  None

For collection areas which recorded no exempt, see map 9

 Constablewick not identified in 1670

For note on mapping see Appendix III

10 miles



Percentage of households with ten or more hearths, 1674-5

- Over 3%
- 2 to 3
- 0.5 to 2
- Under 0.5
- 0 None

Constablewick not identified in 1674-5

For note on mapping see Appendix III

10 miles